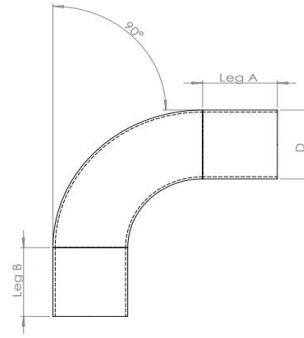


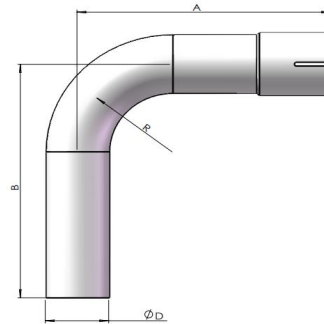
Exhaust elbows



Diameter (inch)	Diameter (mm)	Leg A / B	Radius	SS201	SS304	SS409	Carbon steel
4	101.6mm	50mm	1.2 D	3160.140090	3170.140090	3180.140090	3120.140090
5	127mm	50mm	1.2 D	3160.150090	3170.150090	3180.150090	3120.150090

Diameter (inch)	Diameter (mm)	Leg A / B	Radius	SS201 Polished	SS304 Polished	SS409 Polished	Carbon steel Chrome
4	101.6mm	50mm	1.2 D	3161.140090	3171.140090	3181.140090	3125.140090
5	127mm	50mm	1.2 D	3161.150090	3171.150090	3181.150090	3125.150090

Exhaust bends with one end flared

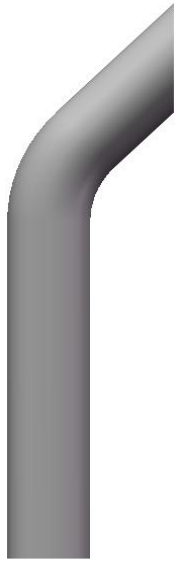


Diameter (inch)	Diameter (mm)	Leg A / B	Radius	SS201	SS304	SS409	Carbon steel
4"	101.6mm	203.2mm	1.2 D	3660.240090	3670.240090	3680.240090	3620.240090
4"	101.6mm	254mm	1.2 D	3660.340090	3670.340090	3680.340090	3620.340090
4"	101.6mm	304.8mm	1.2 D	3660.440090	3670.440090	3680.440090	3620.440090
4"	101.6mm	381mm	1.2 D	3660.540090	3670.540090	3680.540090	3620.540090
5"	127mm	203.2mm	1.2 D	3660.250090	3670.250090	3680.250090	3620.250090
5"	127mm	254mm	1.2 D	3660.350090	3670.350090	3680.350090	3620.350090
5"	127mm	304.8mm	1.2 D	3660.450090	3670.450090	3680.450090	3620.450090
5"	127mm	381mm	1.2 D	3660.550090	3670.550090	3680.550090	3620.550090

Customized specs available

MOQ 30 pieces

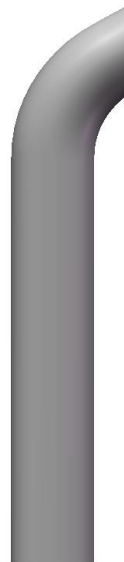
Truck stacks



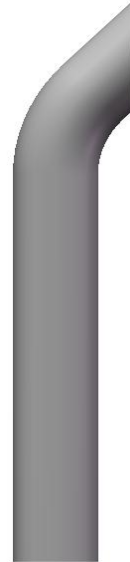
Bull horn stack



Aussie stack



Curved stack



West coast curved stack

Bull horn stack - OD style

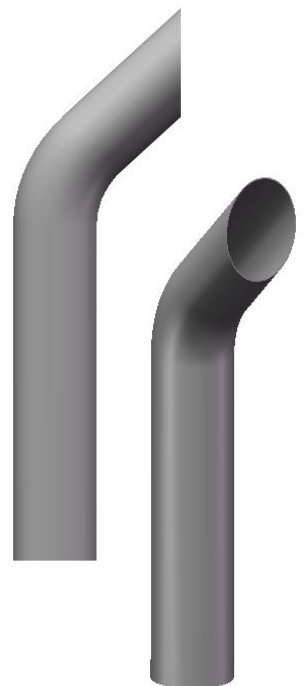
Diameter(inch)	Diameter(mm)	Wall thickness	Height	SS201	SS304
3"	76.2mm	1.5mm	24"	3561.413024	3571.413024
3"	76.2mm	1.5mm	36"	3561.413036	3571.413036
3"	76.2mm	1.5mm	48"	3561.413048	3571.413048
3"	76.2mm	1.5mm	60"	3561.413060	3571.413060

3.5"	89mm	1.5mm	24"	3561.413524	3571.413524
3.5"	89mm	1.5mm	36"	3561.413536	3571.413536
3.5"	89mm	1.5mm	48"	3561.413548	3571.413548
3.5"	89mm	1.5mm	60"	3561.413560	3571.413560

4"	101.6mm	1.5mm	24"	3561.414024	3571.414024
4"	101.6mm	1.5mm	36"	3561.414036	3571.414036
4"	101.6mm	1.5mm	48"	3561.414048	3571.414048
4"	101.6mm	1.5mm	60"	3561.414060	3571.414060

5"	127mm	1.5mm	24"	3561.415024	3571.415024
5"	127mm	1.5mm	36"	3561.415036	3571.415036
5"	127mm	1.5mm	48"	3561.415048	3571.415048
5"	127mm	1.5mm	60"	3561.415060	3571.415060

Bend angle: 45 degree



Aussie Stack - OD style

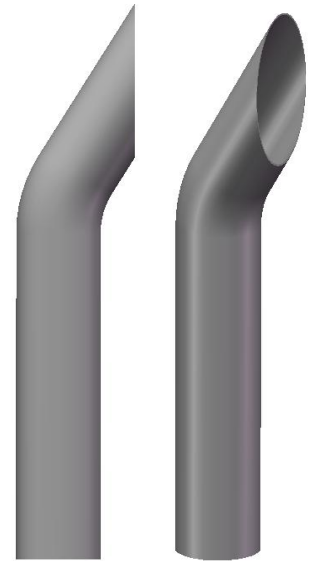
Diameter(inch)	Diameter(mm)	Wall thickness	Height	SS201	SS304
3"	76.2mm	1.5mm	24"	3561.313024	3571.313024
3"	76.2mm	1.5mm	36"	3561.313036	3571.313036
3"	76.2mm	1.5mm	48"	3561.313048	3571.313048
3"	76.2mm	1.5mm	60"	3561.313060	3571.313060

3.5"	89mm	1.5mm	24"	3561.313524	3571.313524
3.5"	89mm	1.5mm	36"	3561.313536	3571.313536
3.5"	89mm	1.5mm	48"	3561.313548	3571.313548
3.5"	89mm	1.5mm	60"	3561.313560	3571.313560

4"	101.6mm	1.5mm	24"	3561.314024	3571.314024
4"	101.6mm	1.5mm	36"	3561.314036	3571.314036
4"	101.6mm	1.5mm	48"	3561.314048	3571.314048
4"	101.6mm	1.5mm	60"	3561.314060	3571.314060

5"	127mm	1.5mm	24"	3561.315024	3571.315024
5"	127mm	1.5mm	36"	3561.315036	3571.315036
5"	127mm	1.5mm	48"	3561.315048	3571.315048
5"	127mm	1.5mm	60"	3561.315060	3571.315060

Bend angle: 30 degree



Reduce bottom to 5 inch

6-5"	152-127mm	2 mm	24"	3561.316024	3571.316024
6-5"	152-127mm	2 mm	36"	3561.316036	3571.316036
6-5"	152-127mm	2 mm	48"	3561.316048	3571.316048
6-5"	152-127mm	2 mm	60"	3561.316060	3571.316060

7-5"	168-127mm	2 mm	24"	3561.317024	3571.317024
7-5"	168-127mm	2 mm	36"	3561.317036	3571.317036
7-5"	168-127mm	2 mm	48"	3561.317048	3571.317048
7-5"	168-127mm	2 mm	60"	3561.317060	3571.317060

8-5"	203-127mm	2 mm	24"	3561.318024	3571.318024
8-5"	203-127mm	2 mm	36"	3561.318036	3571.318036
8-5"	203-127mm	2 mm	48"	3561.318048	3571.318048
8-5"	203-127mm	2 mm	60"	3561.318060	3571.318060

Bend angle: 30 degree



Curved Stack - OD style

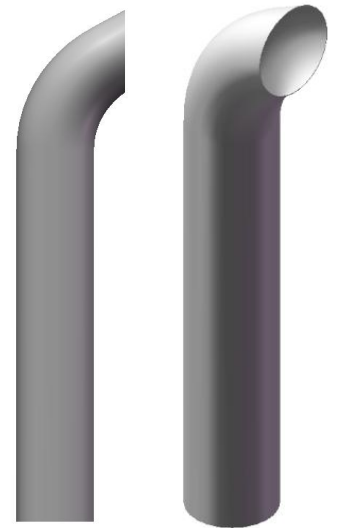
Diameter(inch)	Diameter(mm)	Wall thickness	Height	SS201	SS304
3"	76.2mm	1.5mm	24"	3561.113024	3571.113024
3"	76.2mm	1.5mm	36"	3561.113036	3571.113036
3"	76.2mm	1.5mm	48"	3561.113048	3571.113048
3"	76.2mm	1.5mm	60"	3561.113060	3571.113060

3.5"	89mm	1.5mm	24"	3561.113524	3571.113524
3.5"	89mm	1.5mm	36"	3561.113536	3571.113536
3.5"	89mm	1.5mm	48"	3561.113548	3571.113548
3.5"	89mm	1.5mm	60"	3561.113560	3571.113560

4"	101.6mm	1.5mm	24"	3561.114024	3571.114024
4"	101.6mm	1.5mm	36"	3561.114036	3571.114036
4"	101.6mm	1.5mm	48"	3561.114048	3571.114048
4"	101.6mm	1.5mm	60"	3561.114060	3571.114060

5"	127mm	1.5mm	24"	3561.115024	3571.115024
5"	127mm	1.5mm	36"	3561.115036	3571.115036
5"	127mm	1.5mm	48"	3561.115048	3571.115048
5"	127mm	1.5mm	60"	3561.115060	3571.115060

Bend angle: 60 degree



Reduce bottom to 5 inch

6-5"	152-127mm	2 mm	24"	3561.116024	3571.116024
6-5"	152-127mm	2 mm	36"	3561.116036	3571.116036
6-5"	152-127mm	2 mm	48"	3561.116048	3571.116048
6-5"	152-127mm	2 mm	60"	3561.116060	3571.116060

Bend angle: 60 degree



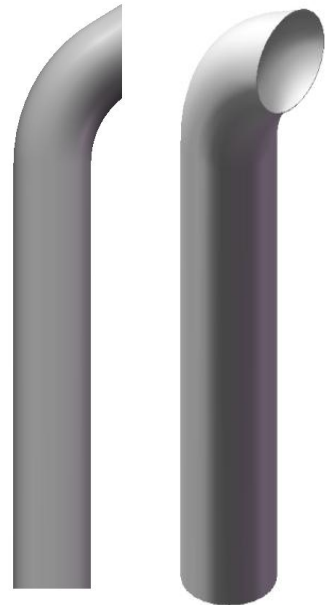
7-5"	168-127mm	2 mm	24"	3561.117024	3571.117024
7-5"	168-127mm	2 mm	36"	3561.117036	3571.117036
7-5"	168-127mm	2 mm	48"	3561.117048	3571.117048
7-5"	168-127mm	2 mm	60"	3561.117060	3571.117060

8-5"	203-127mm	2 mm	24"	3561.118024	3571.118024
8-5"	203-127mm	2 mm	36"	3561.118036	3571.118036
8-5"	203-127mm	2 mm	48"	3561.118048	3571.118048
8-5"	203-127mm	2 mm	60"	3561.118060	3571.118060

West coast curved Stack - OD style

Diameter(inch)	Diameter(mm)	Wall thickness	Height	SS201	SS304
3"	76.2mm	1.5mm	24"	3561.213024	3571.213024
3"	76.2mm	1.5mm	36"	3561.213036	3571.213036
3"	76.2mm	1.5mm	48"	3561.213048	3571.213048
3"	76.2mm	1.5mm	60"	3561.213060	3571.213060

Bend angle: 45 degree

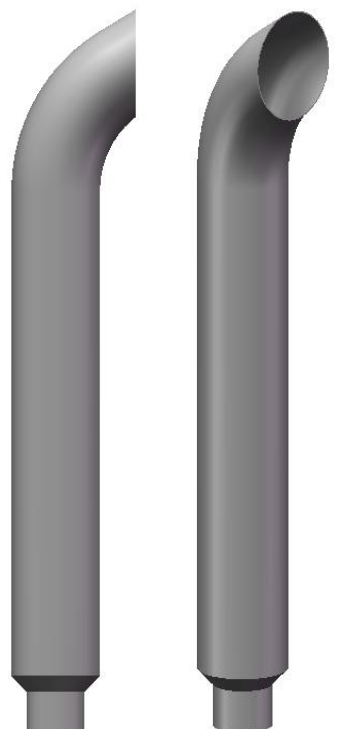


3.5"	89mm	1.5mm	24"	3561.213524	3571.213524
3.5"	89mm	1.5mm	36"	3561.213536	3571.213536
3.5"	89mm	1.5mm	48"	3561.213548	3571.213548
3.5"	89mm	1.5mm	60"	3561.213560	3571.213560

4"	101.6mm	1.5mm	24"	3561.214024	3571.214024
4"	101.6mm	1.5mm	36"	3561.214036	3571.214036
4"	101.6mm	1.5mm	48"	3561.214048	3571.214048
4"	101.6mm	1.5mm	60"	3561.214060	3571.214060

5"	127mm	1.5mm	24"	3561.215024	3571.215024
5"	127mm	1.5mm	36"	3561.215036	3571.215036
5"	127mm	1.5mm	48"	3561.215048	3571.215048
5"	127mm	1.5mm	60"	3561.215060	3571.215060

Bend angle: 45 degree



Reduce bottom to 5 inch

6-5"	152-127mm	2 mm	24"	3561.216024	3571.216024
6-5"	152-127mm	2 mm	36"	3561.216036	3571.216036
6-5"	152-127mm	2 mm	48"	3561.216048	3571.216048
6-5"	152-127mm	2 mm	60"	3561.216060	3571.216060

7-5"	168-127mm	2 mm	24"	3561.217024	3571.217024
7-5"	168-127mm	2 mm	36"	3561.217036	3571.217036
7-5"	168-127mm	2 mm	48"	3561.217048	3571.217048
7-5"	168-127mm	2 mm	60"	3561.217060	3571.217060

8-5"	203-127mm	2 mm	24"	3561.218024	3571.218024
8-5"	203-127mm	2 mm	36"	3561.218036	3571.218036
8-5"	203-127mm	2 mm	48"	3561.218048	3571.218048
8-5"	203-127mm	2 mm	60"	3561.218060	3571.218060